



30 years leading in shoe cleaning sponge manufacturing

Shucare Malaysia Sdn Bhd is a subsidiary company of Calzaretto S.L. in Europe – The world most reputable company with 30 years specialisation in research, development and manufacturing of shoe cleaning sponge exports to all over the world.

The state-of-the-art manufacturing process and facilities allow Calzaretto S.L. produce high quality sponges. Shucare brand of upmarket design sponges are created by Calzaretto S.L. for Asia market requirement.

There are 5 categories of sponges to cater different colour leather articles, oiled leather and suede nubuck. The convenient sponges is suitable for leather, vinyl and synthetic materials. The re-sealable pack makes it ideal for home, office and travelling.



Calzanetto Standard Series



Colour Shine
Black

CSBLK02



Instant Shine
Neutral

CSIS00



Colour Shine
Brown

CSBRW04



Oiled Leather
Restorer

CSOL00

Luxus T Series



Instant Shine
Neutral

ISN00T



Colour Shine
Black

ISB02T

N Series



Instant Shine
Neutral

ISN00N



Colour Shine
Black

ISB02N

Instant Shine Shoe Sponge

Provides brilliant instant shine to all smooth leathers in just one full touch on the surface of the shoes. Suitable for leather, vinyl and synthetic materials. Ideal for home, office and travelling. Neutral is suitable for all colours; black is only suitable for black leather.

Note: Suitable to all smooth leather. Not to use on suede and nubuck.



Nano Water Proofer

Volume/weight:

325ml/200g ; 200ml/123g

Product Code:

325ml/200g - WP200

200ml/123g - WP123

A high performance, long lasting aerosol that repels water and oil based stains. Use regularly to protect all fabric, leather and synthetic articles.



Nano Water Stop

Volume: 180ml
Product Code:
NWS180



Nano Water Stop (Refill)

Volume: 500ml
Product Code:
NWSR500

A water based and eco-friendly water repellent preserves and protects footwear, handbags or any items made of leather and fabric. Effectively repels water and allows material to breathe. Enhanced sprayer technology creates very fine mist upon spraying. Repeated light sprays for better result.



Water Block

Volume: 200ml
Product Code: WB00200

Water based, technologically advanced water and stain protector effectively repels water and stains from all leather and fabric garments.

Preserves and protects footwear, coats, gloves, shoes or any items made from leather or fabric.



Shoe Deo (Odour Control Formula)

Volume:

125ml plastic bottle with sprayer

A water based refreshing scent that will remove any unpleasant odour in shoes.

Available in 6 fragrances.

Product Code:

Ocean Fresh - SDOF125

Lavender - SDLV125

Rose - SDRS125

Kiwi - SDKW125

Lime - SDLM125

Apple - SDAP125










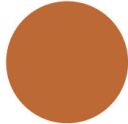







Renovating Polish

Volume:

45g plastic jar

Available Colours & Product Code:

 Ballet RP0155	 Black RP0255	 Brown RP0455	 Burgundy RP0555	 Camel RP0655	 Caramel RP2955	 Cherry Red RP0755	 Chestnut RP0855
 Cognac RP0955	 Dark Brown RP1055	 Dark Green RPDGRN	 Dark Grey RP4455	 Dark Navy RP1155	 Dark Tan RP1255	 Fawn RP1355	 Grey RP3355
 Lipstick RP6755	 Light Brown RP4555	 Light Tan RP3555	 Mid Brown RP4855	 Mid Tan RP3455	 Navy RP1755	 Neutral RP0055	 Oastmeal RP1955
 Ox Blood RP2055	 Red RP2155	 Sherry Tan RP2355	 Silver RP2455	 Scarlet RP6455	 Taupe RP6855	 White RP2555	 Yellow RP2655

Many cobblers in Europe, Australia and Asia are using this product to rejuvenate their customer's shoes. The highly pigmented polish rich with montanic ester waxes effectively restores colour to scuffed leather footwear. Available in various colours to best match consumer needs.

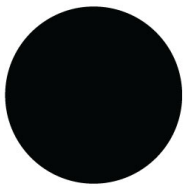


Shoe Cream

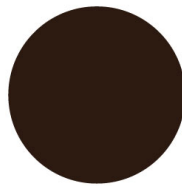
Volume:

50ml glass jar with plastic lid

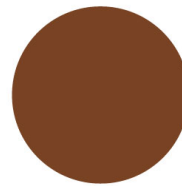
Available Colours & Product Code:



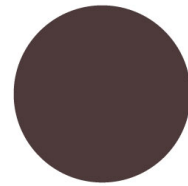
Black
SC250



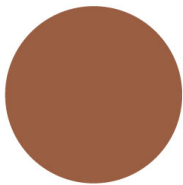
Brown
SC0450



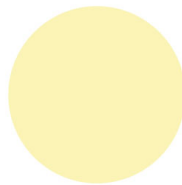
Caramel
SC2950



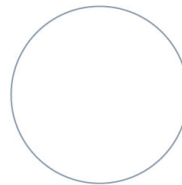
Dark Brown
SC1050



Mid Brown
SC4850



Neutral
SC0050



White
SC2550

A creamy product for smooth leather that revives colour, covers scuff marks, nourishes and imparts a beautiful shine after buffing. It is best for new shoe which could have been in storage for some time. It will penetrate deeper in the leather to condition to prevent creasing and cracking. It contains beeswax that soften shoes and repels water. Occasionally use maintain shoes like new.



Self-Shine Liquid Renovating Polish

Volume:
100ml plastic bottle with
sponge applicator

Product Code:
Black - SSL02100 Brown - SSL04100
Neutral - SSL00100 White - SSL25100
Navy Blue - SSL17100

A high quality liquid renovating polish. Cleans, polishes, protects and restores colour to scuffed leather footwear leaving an instant and long lasting shine. Waterproofs and does not rub off.



Shoe Polish

Volume:
40g/45ml
metal tin can

Product Code & Colour Available:

Black	- TSP002	Dark Tan	- TSP012
Dark Brown	- TSP010	Mid Tan	- TSP034
Neutral	- TSP000	Light Tan	- TSP035
White	- TSP025	Brown	- TSP004

A traditional hard paste polish for all smooth leather shoes.



Military Shine

Volume:
40g/45ml metal tin can

Product Code:
Black - MS0250

Cleans, polishes, waterproofs in one action. Hides scuff marks and scratches. Gives a superior high gloss parade style finish.



Colour Dye

Volume:

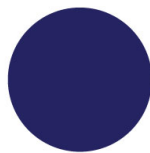
55ml glass bottle with plastic lid, attach with brush

Heavy pigmented and easy to paint, nice colour and does not affect leather texture. Suitable to use on leather, canvas, fabric, suede & nubuck. All colours are intermixable. Match colour before full application. Always do light coats first, apply more coats for desired result. Various colours available, suitable for D.I.Y.

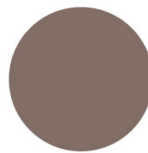
Colour Chart & Product Code:



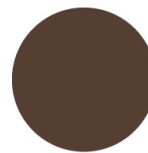
Black
CD0255



Blue
CD3355



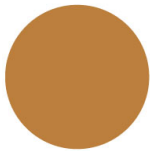
Brown
CD0455



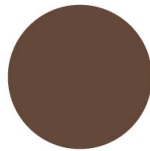
Dark Brown
CD1055



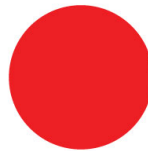
Green
CD6155



Light Brown
CD4555



Medium Brown
CD4855



Red
CD2155



Yellow
CD2655



Preparer

Volume:

55ml glass bottle with plastic lid

Product Code:

SPR0055

A mild solvent used to clean and prepare leather and synthetics prior to re-colouring for better colour performance.

Leather, Suede & Nubuck Dye



Volume:

50ml glass bottle with plastic lid, attach with brush ; 500ml and 5L plastic container

A spirit based dye for leather, suede and nubuck leather. This permanent dye changes and or revitalizes the colour of footwear. All colours can be intermixed to achieve desired result. Not to use on synthetics.

Colour Chart & Product Code:

	Black	Dark Brown	Brown	Navy
50ml	LD0250	LD1050	LD0450	LD1750
500ml	LD02500	LD10500	LD04500	LD17500
5L	LD025lt	LD105lt	LD045lt	LD175lt



Self Shine Dye (Black)

Volume:

55ml glass bottle with plastic lid, attach with brush

Product Code:

SSD55

A highly pigmented dye that finishes to a brilliant shine. Perfect for leather and most synthetics.



Gloss Dye Sealer

Volume:

55ml glass bottle with plastic lid, attach with brush

Product Code:

GDS55

A neutral gloss shine for use after application of dye. Seals the dye, enhances the colour and dries to a high gloss finish.

**Note - Not to be used upon suede and nubuck material.



Cork Seal

Volume:

50ml glass bottle with plastic lid, attach with brush

Product Code:

CS00

Water based sealer helps cork prevent chipping and abrading. It also waterproofs cork, enhances its appearance, eventually prolongs lifespan.



Colour Change

Volume:

50ml glass bottle with plastic lid, attach with brush

A water based acrylic paint to re-colour or repair scratches on all smooth leather and vinyl footwear. All colours can be intermixed to achieve desired shade. Available in wide range of fashion colours.

Colour Chart & Product Code:



Canvas Renovator Black

Volume:

50ml glass bottle, attach with brush

Product Code:

CR0250

Suitable to all types of black shoes, to recolour & renew. Heavy pigmented and easy to paint. Suitable to use on leather, canvas, fabric, suede & nubuck. Always do light coats first, apply more coats for desired result.



Leather Stripper

Volume:

55ml glass bottle with aluminium lid

Product Code:

50ml-LS0050

1L-LS001lt

4L-LS004lt

A blend of solvents to clean genuine leather prior to dyeing or re-colouring. Removes oil based stains and accumulated waxes and polish. Do not use on synthetic materials.



Leather Cleaner

Volume:

55ml glass bottle with aluminium lid

Product Code:

COL0055

A mild solvent to clean and to prepare delicate leather footwear and synthetic footwear prior to re-colouring.



Leather Expander

Volume:

55ml glass bottle with plastic sprayer

Product Code:

LE0050

Leather expander for tight shoes. Not for use on suede or synthetic leathers.



Combi Care

Volume:

120ml plastic bottle with foam pump

Product Code:

CC120

A gentle foam that cares for and impregnates all smooth and rough leathers, fabrics and synthetics. Suitable for patent, smooth leather, suede and TEX material.



Patent Leather

Volume:

55ml glass bottle with plastic sprayer

Product Code:

PLC55

Water based cleaner for patent leather, PU and PVC. Anti-static and prevent fingerprints on article after application.



Leather Conditioner and Patent Cleaner

Volume:

150ml plastic bottle with flip cap

Product Code:

LC00150

A universal leather and patent cleaner that conditions and preserves leather and patent regardless of colour and texture (not for Suede or Nubuck leathers).



Essential Cream Leather Balm

Volume:

150ml plastic bottle with flip cap

Product Code:

ELCB150

An essential cream/leather balm is a gentle cleansing lotion for all smooth leathers. Gently cleans, conditions and nourishes the leather giving a beautiful shine. Maintains the leather colour and refreshes the leather. Regular use inhibits mould. Ideal for shoes, bags, clothing, furniture and any leather items.



Sneaker Shampoo

Volume:

100ml plastic bottle with brush applicator

Product Code: SSC100

A gentle cleaner to remove surface dirt from footwear and all items made of canvas and synthetic articles.



Super Plus White

Volume:

100ml plastic bottle with sponge applicator

Product Code: SPW100

A heavily pigmented liquid to restore the colour of white leather, synthetic leather, PU, PVC or canvas, can also be used to repair bad scuffs on uppers at footwear.



White Restorer

Volume:

100ml plastic bottle with sponge applicator

Product Code: WR100

A heavily pigmented liquid to restore the colour to white leather or canvas.



Heel & Sole Edge Renew

Volume:

100ml plastic bottle with sponge applicator

Colour & Product Code:

Black - ER02100

Dark Brown - ER10100

To renew the colour of heels and sole edge of leather and synthetic footwear. Can also be used to repair bad scuffs on uppers of footwear. Water resistant. Do not use on suede or nubuck.



Suede, Nubuck & Fabric Reviver

Volume:

100ml plastic bottle with sponge applicator

Colour & Product Code:

Black - SNFR02100

Dark Brown - SNFR10100

To enhance, revive, condition and protect the colour of suede, nubuck and fabric.



Beeswax Dressing

Volume:

45g plastic jar

Product Code:

BD45

The dressing penetrates leather and makes it supple and waterproof. It is suitable for antique and modern leather furniture or leather coats and footwear and accessories. It is perfect for saddle and tack. If leather is dry, it will absorb surprising amount of leather dressing. Once the leather restored, shine it with polish.



Delicate Gel

Volume:

45g glass jar

Product Code:

DG45

A perfect gel to soften, protect and moisturize leather. Suitable to use on smooth leather, even aniline dye leather and sheep skin or any other leather material that has high water absorption.



Dubbin

Volume/Size:

125g & 45g

Colour & Product Code:

Black 125g - DB02125

Brown 125g - DB04125

Neutral 125g - DB00125

Neutral 45g - DB0045

A traditional non-shine waterproofing compound that preserves and conditions leather football, hiking and work boots, heavy leather jackets and leather sporting goods.



Mink Oil

Volume:

100ml metal tin & 45g Glass jar

Product Code:

MOIL100

MOIL50

Replaces lost oil and lubricates leather fibres providing protection, conditioning and waterproofing for all smooth leather articles.



Wooden Horsehair Brush 11cm

Size:
11cm x 4.9cm x 4.2cm

Product Code:
WHM11



Premium Horsehair Brush

Size:
14.8cm x 4.9cm x 4.2cm

Product Code:
HBPL

Horsehair brush is good for cleaning, removing dust and lint on suede and nubuck. It can also be used to apply polish on smooth leather.

Note: Use different brushes for cleaning and polishing. Also use different brushes to apply different colours of shoe polish/shoe cream.



Shucare Dauber Brush

Size:
15cm x 4cm x 3.5cm

Product Code:
DBB



Polishing Cloth

Size:
43cm x 31.5cm

Product Code:
PC25

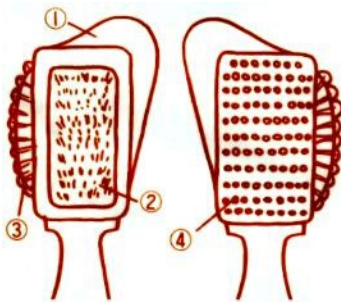
Flannelette polishing cloth with over lock stitching around the edges. Its softness is performs better for cleaning & polishing without damaging surface material.



Combi Brush / Suede Brush

Size:
15cm x 4cm x 2.5cm

Product Code:
BRSNWN02



Four ways cleaning:

1. Thin protruding brush is for cleaning on harder to reach crevices and grooves.
2. Welt surface used for stronger cleaning on heavier scuff marks and stains.
3. Arched half circle brush allows for easier cleaning on rounded corners.
4. Nylon bristles used for a lighter and gentler cleaning on light scuff marks for thin fine suede and nubuck

Suede & nubuck requires more care and attention for cleaning. Dry cleaning may be the best option without damaging it. A good brush is essential for suede and nubuck. The fine fibres standing up on suede & nubuck refers to nap. A suede brush will keep the nap looking fresh and help to remove dust & dirt trapped in the nap.

Regular brushing is an easy and effective way to take care of it. Combi brush/suede brush is made of brass wire bristles surrounded by soft protective nylon bristles. To lift the nap, gently brush over the suede with nylon bristles.

Combi/suede brush is effective in removing stains, use the serrated edge of the brush to clean between the sole and the uppers of shoes.



Medium Shoe Horn

Product Code: SHM

Length - 15cm

Material - Plastic



Long Shoe Horn Model M

Product Code: SHPLM02

Length - 44cm

Material - Plastic



Chrome Metal Shoe Horn (Medium)

Product Code: SHMM16

Length - 16cm

Material - Metal



Chrome Metal Shoe Horn (Long)

Product Code: SHML42

Length - 42cm

Material - Metal



Put on shoes more easily



Avoid excessive bending



Make sure heel grips in place

Gel Steppers

Product Code: GSTEP

A cushioning gel half insole that prevents forefoot pain and foot slipping forward. Repositionable.



Gel Soft Steps

Product Code: GSST

A cushioning gel half insole that prevents forefoot pain and foot slipping forward. Self adhesive.

Gel Heel Pads

Product Code: GHP

A gel heel cushion that provides cushioning protection. Self adhesive.



Gel Heel Grips

Product Code: GHG

A gel heel grip that prevents heel slippage, blisters and chafing. Self adhesive.

Leather Heel Grips

Product Code: LHP

Prevents heel slipping, blisters, chafing and heel pain. Self adhesive.





Deodour Foam Insoles

Size & Thickness:

Universal size; 2.3mm

Product Code:

IFMA

Ultra thin perforated foam cushioning insole, anti-bacterial and anti-fungal with enhanced breathability to prevent foot and shoe odour. Wash with warm water when required. Trim to fit with size card provided.



Fresh Feet Charcoal Insoles

Size & Thickness:

Universal size; 3.3mm

Product Code:

IFFU

Perforated odour destroying activated carbon foam backed cushioning insole. Wash with warm water when required. Trim to fit with size card provided.



Travel Insoles

Size:

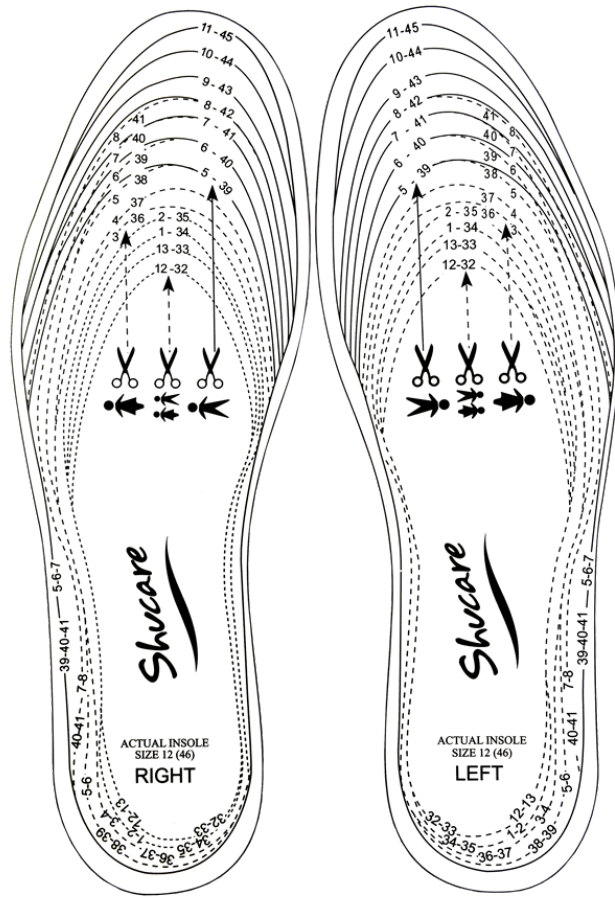
Universal size

Product Code:

TI

High quality and great durability which provides the best comfort, absorbs sweat and stay feet fresh. It allows you to walk all day long with its contour design and improved arch support. Universal size trim to fit.

Shucare Insole Size Chart



Code Size	UK Size	USA Size	Europe Size
3	3	3.5 - 4	36
4	4	4.5 - 5	37
5	5	5.5 - 6	38
6	6	6.5 - 7	39
7	7	7.5 - 8	41
8	8	8.5 - 9	42
9	9	9.5 - 10	43
10	10	10.5 - 11	44
11	11	11.5 - 12	45
12	12	12.5 - 13	46



Orthotic Insoles

Sizes & Product Code:

Size 3 - OI03	Size 7 - OI07
Size 4 - OI04	Size 8 - OI08
Size 5 - OI05	Size 9 - OI09
Size 6 - OI06	

Contour insoles provide support, balance, stability, shock absorption and comfort.



Gel Heel Cushion

Sizes & Product Code:

Men - GHCM
Women - GHCL

Superior dual density polymer gel.



Gel Honeycomb Insoles

Sizes & Product Code:

Men - GHCM
Women - GHCL

Honeycomb construction for maximum cushioning and minimum weight with velvety lining that ensures cool comfort. When needed, trim to fit.



Spiral Cedar Shoe Tree

Sizes & Product Code:

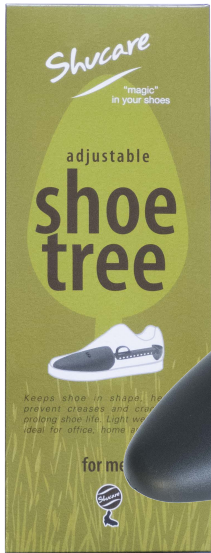
5-6 (38/39) - CSTS38/39

9-10 (42/43) - CSTS42/43

7-8 (40/41) - CSTS40/41

11-12 (44-45) - CSTS44/45

Premium quality handcrafted cedar shoe tree helps to control odour and absorb moisture. Cedar's natural scent keeps shoes smelling fresh.

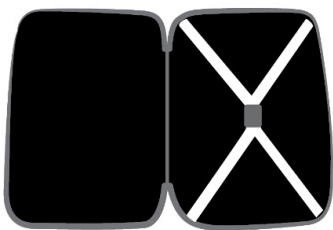


Adjustable Shoe Tree

Sizes & Product Code:

Men - STPAM

Light weight plastic shoe tree fits for most sizes of shoes, adjustable to required stretch strength. Ideal for home and travel.



Perfect for business travelers, to keep shoes in shape putting in a suitcase.



Provides handful help to keep shoes in shape while polishing and buffing, to ensure the best outcome effect.



Inserts shoe tree in shoes to maintain its shape to prevent creases and cracks. Eventually helps to prolong shelf life.



FLAT BLACK
Product code - 48"/120CM - LW062



FLAT YELLOW
Product code - 48"/120CM - LW040



FLAT BLUE / WHITE
Product code - 48"/120CM - LW048



ROUND WHITE
Product code - 48"/120CM - LW061



FLAT WHITE
Product code - 48"/120CM - LW063



FLAT ROYAL BLUE
Product code - 48"/120CM - LW041



FLAT PURPLE / YELLOW
Product code - 48"/120CM - LW049



ROUND BLACK / YELLOW
Product code - 48"/120CM - LW065



FLAT BEACH
Product code - 48"/120CM - LW064



FLAT GOLD BROWN
Product code - 48"/120CM - LW042



ROUND BLACK / WHITE
Product code - 48"/120CM - LW050



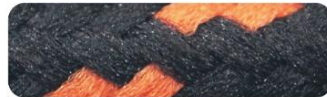
ROUND BLACK / BROWN
Product code - 48"/120CM - LW066



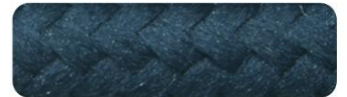
FLAT LIGHT PURPLE
Product code - 48"/120CM - LW035



FLAT RED
Product code - 48"/120CM - LW043



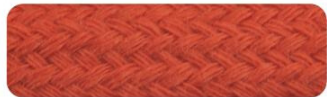
ROUND BLACK / ORANGE
Product code - 48"/120CM - LW051



ROUND NAVY
Product code - 48"/120CM - LW067



FLAT DARK PURPLE
Product code - 48"/120CM - LW036



FLAT DARK ORANGE
Product code - 48"/120CM - LW044



FLAT GREEN
Product code - 48"/120CM - LW052



ROUND YELLOW / BROWN
Product code - 48"/120CM - LW069



FLAT LIGHT BLUE
Product code - 48"/120CM - LW037



FLAT ORANGE
Product code - 48"/120CM - LW045



ROUND CAMEL
Product code - 32"/80CM - LW053
- 40"/100CM - LW054



ROUND NAVY / WHITE / RED
Product code - 52"/130CM - LC091



FLAT APPLE GREEN
Product code - 48"/120CM - LW038



FLAT GREEN / BLACK
Product code - 48"/120CM - LW046



ROUND BROWN
Product code - 32"/80CM - LW055
- 40"/100CM - LW056



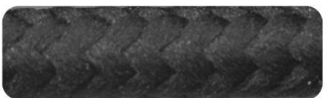
OVAL WHITE
Product code - 36"/90CM - LC061
- 48"/120CM - LC063



FLAT KHAKE
Product code - 48"/120CM - LW039



FLAT RED / YELLOW
Product code - 48"/120CM - LW047



ROUND BLACK
Product code - 48"/120CM - LW060



OVAL BLACK
Product code - 36"/90CM - LC062
- 48"/120CM - LC064



ROUND MAROON / BLACK
Product Code - 48"/120cm - LW075



ROUND LIGHT PINK / BLACK
Product Code - 48"/120cm - LW073



ROUND GREEN / BLACK
Product Code - 48"/120cm - LW071



ROUND DARK PINK / BLACK
Product Code - 48"/120cm - LW070



ROUND MAROON / BLACK
Product Code - 48"/120cm - LW075



ROUND MAROON / BLACK
Product Code - 48"/120cm - LW075



ROUND YELLOW
Product code - 36"/90CM - LW087



ROUND YELLOW / BROWN
Product Code - 48"/120cm - LW069



ROUND YELLOW
Product code - 52"/130CM - LW088



ROUND MAROON / BLACK
Product Code - 48"/120cm - LW075



ROUND MAROON / BLACK
Product Code - 48"/120cm - LW075



ROUND MAROON / BLACK
Product Code - 48"/120cm - LW075



ROUND YELLOW / BROWN
Product code - 60"/150CM - LW078



ROUND BLACK
Product code - 60"/150CM - LW079



ROUND WHITE
Product code - 60"/150CM - LW080



ROUND CAMEL
Product code - 60"/150CM - LW081



WAXED ROUND BROWN

Product Code -
28"/70cm - LC053
32"/80cm - LC055



WAXED ROUND BLACK

Product Code -
28"/70cm - LC054
32"/80cm - LC056

Dress Shoe Lace Length

Eyelet Pairs

Shoe Lace Length

3

28" / 70cm

4

32" / 80cm



Casual Shoe Lace Length

Eyelet Pairs

Shoe Lace Length

3

32" / 80cm

4

36" / 90cm

5

40" / 100cm to 42" / 105cm

6

48" / 120cm

7

52" / 130cm

